



New check-in procedure for Cargo from 6 May

From 6 May, a new automatic check-in system will be used for Viking Line vessels. The system weights and measures each vehicle and reads its number plate, adding this information to the booking.

If you are booked on the next departure, you will be admitted to the parking area. If there is a problem with your booking, you will be directed to the lane marked "Waiting area" on the map, where you can park while visiting the Cargo office to resolve the problem.

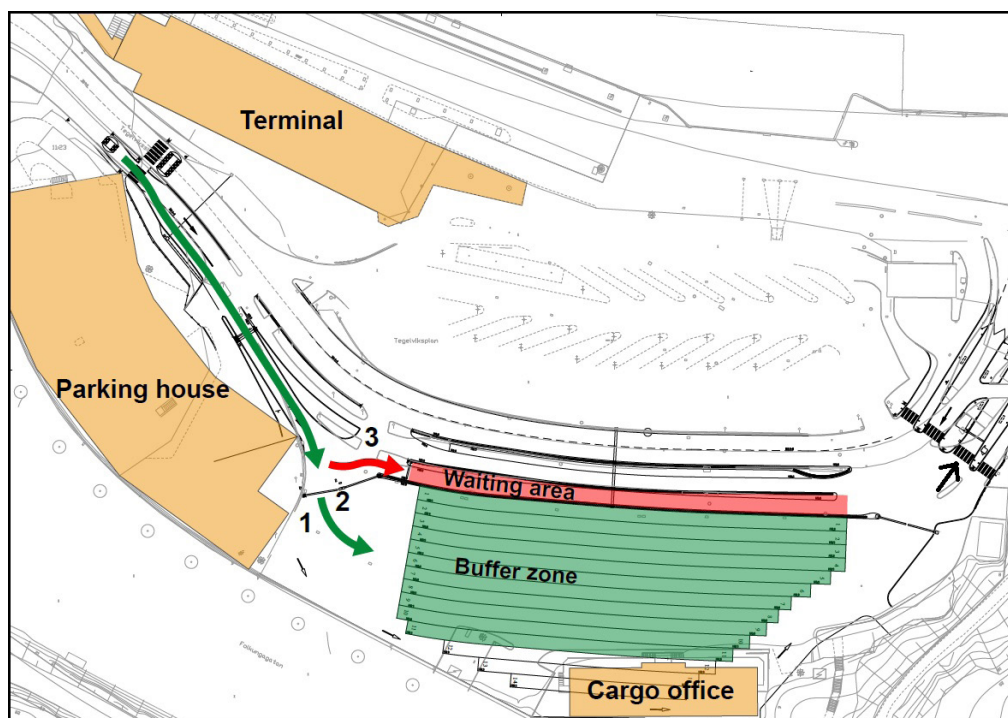
If you are not booked on the next departure, we would ask you to drive elsewhere and wait. Unfortunately, there are no parking facilities at the port.

Earliest check-in times:

M/S Viking Grace departure 7.45 am – earliest entry evening before from **18.00**.

M/S Mariella and M/S Gabriella departure 16.30 – earliest entry **08.00**.

M/S Amorella departure 20.00 – earliest entry **14.00**.



With a ticket:

1. When the gate opens, drive into the parking area ("Buffer zone").
2. If the gate does not open – key in your booking number or vehicle number plate.
3. If the gate still does not open – drive to the "Waiting area" and contact the Cargo office.

Without a ticket:

3. Drive to the lane marked "Waiting area" and contact the Cargo office.

Turn the page to see where to drive.



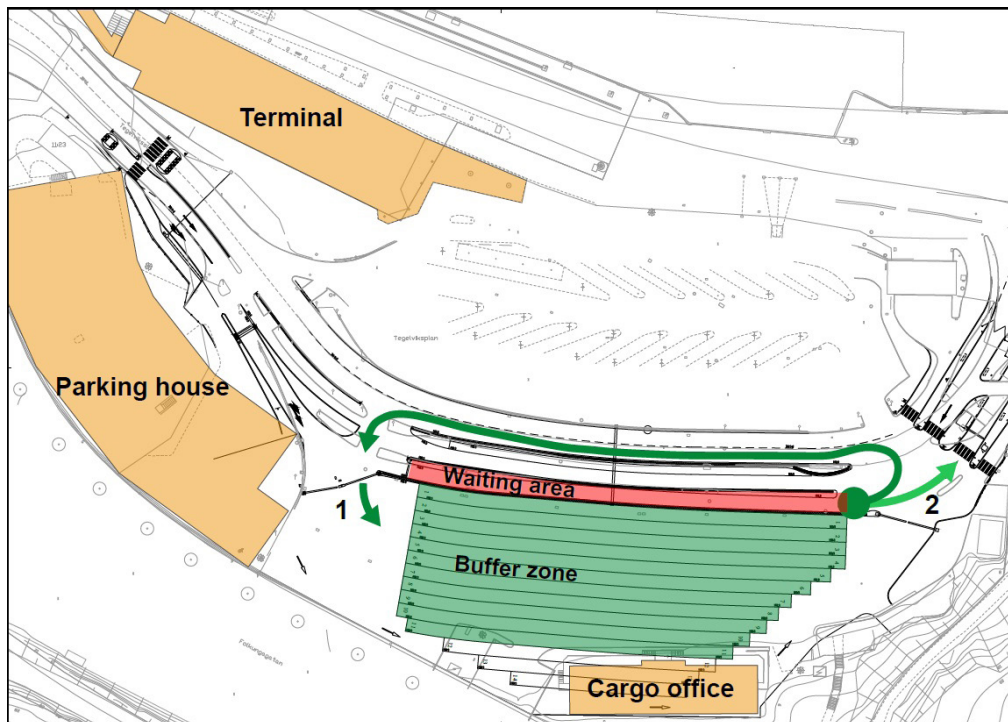
Co-financed by the Connecting Europe
Facility of the European Union

Upphovsmannen ansvarar för publikationens innehåll.
Europeiska unionen tar inget ansvar för hur innehållet används.

UTGIVEN AV: STOCKHOLMS HAMN AB
TELEFON 08-670 26 00
KONTAKT: INFO@STOCKHOLMSHAMNAR.SE
WWW.STOCKHOLMSHAMNAR.SE



To return to the parking area



To leave the “Waiting area”

1. Drive to the parking area in the “Buffer zone”.
2. Or use your code as instructed by the Cargo office.

