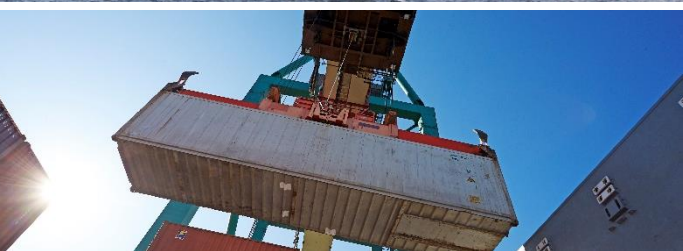


Prices and terms 2018

Port of Stockholm

Version 201802



CONTENTS

FOREWORD	3
GENERAL INFORMATION	
CONTACT INFORMATION.....	4
TERMS AND CONDITIONS.....	4-5
INVOICING PRINCIPLES.....	5-6
MERCHANT SHIPPING	
PORT CHARGES ON VESSELS AND GOODS.....	7-8
LAY-DAYS TARIFF	9
PASSING VESSELS	9
VESSELS TO BE REPAIRED	9
INNER CITY QUAYS AND TRAFFIC	
ARCHIPELAGO TRAFFIC.....	10-11
RECREATIONAL VESSELS	12
OTHER SHIPS	
PRIVATE YACHTS	13
OTHER SHIPS.....	13
STATE SHIPS ETC	14
PONTOONS AT STRANDVÄGEN.....	134
HARBOUR SERVICE	
BOATMEN.....	15
SERVICE GROUP.....	16
ISPS FEES AND SECURITY GUARDS.....	16
ID CARDS AND KEYS	17
LOCK DUES	18
DELIVERY OF FRESH WATER	19
SUPPLY OF ELECTRIC POWER TO VESSELS	20

FOREWORD

MEETING THE FUTURE WITH A FOCUS ON THE ENVIRONMENT

Here is our price list for 2018. It contains the prices for the services and assistance we offer, but please contact us if you have any questions or queries. We are available to all companies wishing to operate shipping activities in Stockholm, Nynäshamn or Kapellskär.

We have newly completed two of our three major infrastructure projects. Now we have an expanded and rebuilt Port of Kapellskär and an entirely new Värta port and terminal in operation in Stockholm. The new facilities have been positively received by our customers and we would like to take this opportunity to thank everyone for their support and the excellent collaboration we have enjoyed with all of those involved in these projects. It has been a challenge to maintain full operational activities at the ports during their reconstruction. Now only the Stockholm Norvik Port remains to be completed. The work to construct this new freight port began in 2017 and the port will be open for arrivals in 2020. The market is with us and we see great need for sustainable transport to and from the growing Stockholm region.

The biggest challenge for our pricing structure in the future is to develop our environmental rebates. This is an incredibly important and difficult issue for all commercial activities and we want to be part of supporting the initiatives and systems that result in the greatest genuine benefits. We therefore do not intend to make any changes to our environmentally differentiated tariffs during 2018. Instead we will monitor developments within this area, both within Sweden and internationally, with the intention of establishing the future structuring of the 2019 price list.

Together we will ensure that shipping can contribute by providing sustainable transport of both goods and passengers to and from the Stockholm region, one of Europe's fastest growing capital cities.

Yours sincerely



Johan Castwall,
Port of Stockholm Managing Director



GENERAL INFORMATION



CONTACT

PORT AND TRAFFIC CONTROL

BTC

Tel +46 (0)8-670 28 10

E-mail: btc@portsofstockholm.com

SEASON TICKETS AT OUR LOCKS

Anita Krafft

Tel +46 (0)8-670 28 00

E-mail: slusskort@portsofstockholm.com

FERRIES- AND CARGO

Richard-John Lagerberg

Tel +46 (0)8-670 26 46

Mobile +46 (0)70-770 26 46

E-mail: richard-john.lagerberg@portsofstockholm.com

INNER CITY QUAYS AND TRAFFIC

- Archipelago traffic

- Recreational vessels

- Yachts etc.

www.portsofstockholm.com/stockholm/berths/

INTERNATIONAL CRUISE TRAFFIC

Stefan Scheja

Tel +46 (0)8-670 28 13

Mobile +46 (0)70-770 28 13

E-mail: stefan.scheja@portsofstockholm.com

OTHER QUESTIONS

Bengt Ohlsson

Tel +46 (0)8-670 27 61

Mobile +46 (0)70-770 27 61

E-mail: bengt.ohlsson@portsofstockholm.com

GENERAL TERMS AND CONDITIONS

Ports of Stockholm has operations in Kapellskär, Stockholm and Nynäshamn and annually issues 4 price lists;

- Price List for International Cruise Liners (in accordance with Swedish Maritime Administration regulations, SJÖFS 2016:2, 7 §)
- Price List for the Port of Kapellskär
- Price List for the Port of Stockholm
- Price List for the Port of Nynäshamn

All prices stated are valid from 1 January until further notice, however at the latest until 31 December in the year of issue. Ports of Stockholm reserves the right to revise price lists at any time, and current price lists are always available on Ports of Stockholm's website, <http://www.portsofstockholm.com>.

According to Swedish Maritime Administration regulations (SJÖFS 2013:4) the Port of Stockholm, Port of Kapellskär and Port of Nynäshamn are classed as public ports. In accordance with Swedish Law (1981:655) governing certain tariffs at public ports, Ports of Stockholm has the right to charge dues if quays, jetties or similar facilities within the port area that belong to the port owner have been called at or utilised.

Harbour dues, according to a fixed rate as set out in this price list, or according to special agreements, are payable for vessels calling at or leaving public port areas and for goods, passengers and vehicles accompanying these vessels.

GENERAL INFORMATION

For comprehensive details of terms and conditions please refer to Ports of Stockholm's Port Regulations and Ordinance information, which is available on Ports of Stockholm's website, <http://www.portsofstockholm.com>.

Invoicing of harbour dues according to this price list occurs after the vessel's application, which the vessel's master, ship owner or representative for any of these shall submit in accordance with Ports of Stockholm's Port Regulations and Ordinance instructions.

When the vessel is exempt from the obligation of submitting a vessel application, the vessel's master shall submit to Ports of Stockholm the data necessary to establish the amount of the harbour dues. Special regulations apply to vessels with permanently allocated berths. Information about the goods loaded or unloaded shall be submitted to Ports of Stockholm four (4) days at the latest after the completed loading or unloading. Ports of Stockholm is entitled to demand provision of any information necessary to satisfy the requirements of Swedish Authorities, or information necessary to establish the amount of harbour dues, or to satisfy other needs of Ports of Stockholm for information, such as to facilitate logistics planning.

Harbour dues charged according to GT (Gross Tonnage) are based on GT in accordance with Lloyd's Register (1969 measurement regulations), or alternatively the submitted Tonnage Certificate.

Harbour dues charged by the day are based on a time period beginning and ending 00:00 – 24.00, unless otherwise stated.

In the event that Swedish Authorities decree that special tariff provisions shall be levied for the vessels of specific nations or for specific types of vessels, these provisions will apply unreservedly.

Ports of Stockholm's port facilities are approved by the Swedish Transport Agency as compliant with maritime and port security legislation. This means that various types of security measures are implemented depending on the prevailing security threat level. Ports of Stockholm may agree specific contracts with shipping companies/other companies using the port facilities regarding security measures for security threat level 1, and how such measures shall be financed. For elevated security threat levels, Ports of Stockholm may implement additional security fees, based on the actual costs incurred due to the elevated security protection measures. Shipping companies operating year-round scheduled services must agree a specific contract with Ports of Stockholm regarding maritime and port security.

Ports of Stockholm is a member of the Ports of Sweden organisation and implements Ports of Sweden General Conditions 1989 for terminal operations.

This price list is issued in Swedish with an English translation. In the event of inconsistencies between the Swedish and English versions, the Swedish version shall prevail.

INVOICING PRINCIPLES

The invoiced amount is rounded-up to the nearest whole Swedish Crown (SEK).

Invoiced amounts must be paid to Ports of Stockholm 20 days at the latest after the date of invoice, unless otherwise agreed. In the event of late payment, a statutory interest rate will be debited in accordance with Swedish Law (SFS 1975:635). A remuneration fee for issuing a written

GENERAL INFORMATION

reminder will be debited in each instance in accordance with Swedish legislation governing the remuneration of collection expenses (SFS 1981:739).

VAT will be added on all charges in accordance with Swedish law, unless the vessel is exempt from VAT or it is otherwise stated that the prices include VAT.

Requirements for advance payment may apply.

As part of Ports of Stockholm's efforts to minimise environmental effects, invoices may be issued by email. Please send your company name, customer number and email address to debitering@stockholmshamn.se. Invoices will then be sent to the stated email address.

MERCHANT SHIPPING



VESSEL DUES

Tariff*1	Description	Price/unit
Basic fee		3,99 SEK/GT
	When calling quay not belonging to Ports of Stockholm or when exempted for waste delivery*2	3,44 SEK/GT
	Minimum charge	1 995 SEK/call
	Maximum charge for vessels with l.o.a. ≤ 80 meter	2 885 SEK/call
Nitric oxide rebate*3	0,00-0,49 g/kWh	-0,22 SEK/GT
	0,50-0,99 g/kWh	-0,21 SEK/GT
	1,00-1,99g/kWh	-0,20 SEK/GT
	2,00-2,99 g/kWh	-0,19 SEK/GT
	3,00-3,99 g/kWh	-0,18 SEK/GT
	4,00-4,99 g/kWh	-0,17 SEK/GT
	5,00-5,99 g/kWh	-0,16 SEK/GT
LNG rebate*4		-0,05 SEK/GT
Electricity connection*5		-1 000 000/vessel
Waste surcharges	Scrubber waste*6	Prices available on request
	Waste surcharge*7	0,55 SEK/GT
	Maximum	10 800 kr/call
ISPS-fees*8	see Harbour service, ISPS fees and Security Guards	

CARGO DUES

Tariff*9	Goods Code (Tarc)	Description	Price/unit
Basic fee			31,13 SEK/ton
	1001-1005	Grain	10,31 SEK/ton
	1703	Molasses	10,31 SEK/ton
	2517	Sand and Gravel etc.	2,75 SEK/ton
	2523	Cement	10,31 SEK/ton
	2701-2704	Cole and Coke etc.	19,83 SEK/ton
	2710 11 11 - 2710 11 90	Low viscosity oils (Petrol etc.)	24,53 SEK/ton
	2710 19 11 - 2710 19 29	Medium viscosity oils (Paraffin etc.)	18,55 SEK/ton
	2710 19 31 - 2710 19 69	Heavy oils	
	2711 11 00	LNG	31,13 SEK/ton
	4401-4407, 9602	Timber, Pellets, Woddchips	9,09 SEK/ton
	4701-4708	Pulp, Waste paper	9,09 SEK/ton
	4801-4808	Paper and Board	9,09 SEK/ton
	6810	Building blocks	10,31 SEK/ton
Rebates	LNG rebate		50 %
Other	Container fee*10		395,00 SEK/cont
	Passenger fee*11		19,03 SEK/pax
	Vehicle fee*12	Private car	25,22 SEK/vehicle
		Cargo vehicle	20,00 SEK/lm
	Bus	44,04 SEK/ vehicle	

MERCHANT SHIPPING

*¹ Harbour dues for vessels are levied each time a vessel puts into port. Vessels with a gross tonnage (GT) below six (6) are exempt from dues. If a vessel calls at the port and uses a dock or pier, which does not belong to the Port of Stockholm, the harbour dues listed above will be reduced. The same discount applies to vessels on domestic routes carrying sand or grain or vessels which are lying at a buoy without calling into berth within the port area. From January 1st, 2012 the fee is always calculated on the GT without regard to possible deduction for segregated ballast tanks and calculated on a minimum of 500 GT. For dues that apply for international cruise traffic pursuant to SJÖFS 2016:2, 7§, refer to the separate price list.

*² This price applies when a competent authority has granted a vessel in regular service, an exception from compulsory delivery of all waste generated from the vessel.

*³ Vessels, which through different actions have reduced nitric oxide emissions to less than 6 grams per kilowatt hour, will be granted a reduction in harbour dues for vessels provided that the Swedish Maritime Administration has issued a valid Nitric Oxide Certificate in accordance with SJÖFS 2014:10. Notification of this Nitric Oxide Certificate should be submitted to the Port and Traffic department (BTC) when reporting a vessel's first call into port. Vessels operating a regular scheduled Liner Service shall submit copies of certificates to Ports of Stockholm concerning each certification occasion and/or shall inform Ports of Stockholm if certification changes or ceases to be valid. The number of entitled Nitric oxide rebate calls should be included in the periodic statistics.

*⁴ For this rebate to apply the vessel must run on LNG as its main fuel source and must be able to provide proof of this on request.

*⁵ Vessels that after 1 January 2015 are refitted to enable connection to the electricity grid at the quayside where such supply is available, fulfil the criteria for Liner Service, spend at least two (2) hours in port per call and connect to the electricity grid while at the quayside, are granted a one (1) million SEK rebate on condition that services operate for a minimum of three (3) years. If the vessel ceases to operate services or no longer fulfils the criteria stated above shall repayment be made proportional to the time deficit that falls short of the three (3) years.

*⁶ Vessels that wish to deposit waste from Scrubbers must give notice 5 working days before arrival to the Port.

*⁷ In situations when the Port incurs additional costs beyond what is normal when a vessel is depositing waste, an additional charge will be applied in the following cases;

- when "Notification of depositing waste from a vessel" has not been made according to Swedish law or according to the provision of the Swedish Maritime Administration,
- when the Port has not been notified of the inclusion of unknown substances, solvents or detergents in sludge
- when drums and packages containing oil residue or hazardous waste are not correctly packed and labelled with the contents or when depositing and placement is not carried out at assigned areas,
- when depositing is not done at the agreed time,
- when the vessel does not provide personnel for the depositing of sludge,
- when the pump capacity for sludge is less than 5 m³ per hour,
- If the limit set by Stockholm Vatten AB for sulphur levels in wastewater is exceeded.

Information regarding the conditions for depositing waste as well as whether and how the waste can be deposited can be provided by the Port and Traffic department (BTC).

*⁸ For vessels covered by IMO port facility security code requirements that berth at quays at which there is normally no security monitoring. See further information at section Harbour Service.

*⁹ Dues on goods are debited for goods that are unloaded or loaded from or onto vessels within the port area. Half of the dues on goods will be levied for goods loaded or unloaded without being moved across a quay or jetty owned by the Port or when lightering is performed at a buoy.

The following conversion factors apply for timber

- Round timber 850 kg/m³, solid volume under bark
- Sawn wood, import, 700 kg/m³, solid volume
- Sawn wood, export, 550 kg/m³, solid volume

Exceptions from dues on goods;

- ship's requisites and provisions,
- containers, platforms or other load carriers of a permanent character intended as a means of transport and which do not make up an independent commodity,
- goods that are unloaded or loaded from or onto a vessel as set out in "State ships"

*¹⁰ Fee for each loaded container being loaded or discharged at the containerterminal (CTF).

*¹¹ Passenger fee is applicable for each embarking and disembarking passenger.

*¹² Vehicle fee is applicable for each vehicle in service that accompanies a vessel to or from the port.

MERCHANT SHIPPING

LAY-DAYS TARIFF

A lay-day tariff is applied when a vessel is docked for more than 48 hours at a quay belonging to Port of Stockholm in total before unloading/loading starts and unloading/loading has been completed. A lay-day tariff is always payable for passenger vessels 48 hours after the vessels has put into port. The lay-day tariff is levied when caused by conditions that the Port of Stockholm cannot prevail over.

The lay-day tariff is payable per started 48 hour time period and is **25%** of the current harbour dues for vessels.

PASSING VESSELS

Based on the regulations of the Swedish Maritime Administration (SJÖFS 2013:4) and by Swedish Law (1981:655), Port of Stockholm has the right to charge vessels not only when they call into a berth or quay but also when passing through the Stockholm Port Area regardless of if the vessel called into a berth/quay or loaded/discharged goods, passengers or waste.

Per passage	1,92 SEK/GT
Minimum fee	500 SEK/passage

VESSELS TO BE REPAIRED

Vessels, putting into port solely for repairs at a shipyard situated within the Stockholm port area, are exempted from tonnage tariffs. However, a fee is payable when a quay or jetty owned by the port is utilised for more than 12 hours before or after the visit to the shipyard or when the quay is used to load or unload goods from or to the vessel.



PORT AND ARCHIPELAGO TRAFFIC

Port and archipelago traffic is generally defined as vessels not exceeding a gross tonnage of 500 tonnes operating passenger services (such as regularly scheduled sailings or charter services) within the Stockholm Port Area.

VESSEL DUES

Dues for port and archipelago traffic vessels are charged as an annual fee per vessel per calendar year. Vessels not operating services during the period May-September pay a half dues tariff. Dues are non-refundable. Vessel dues include costs for passage through locks and offloading black and grey water (sewage) at any of the port's waste management stations.

Vessel > 12 x 4 metres	15 000 SEK/year
Vessel < 12 x 4 metres	7 500 SEK/year

ENVIRONMENTAL REBATES

If the main engine is equipped with catalytic exhaust emission control, or has other equipment (such as electrical power) that reduces the vessel's NOx emissions by at least 50%, a **50% rebate** of vessel dues applies.

QUAY CHARGES

Quay charges apply for the mooring of vessels or pontoons at quays administered by Ports of Stockholm. Charges are calculated according to length in metres. Bow-moored vessels or pontoons not exceeding a width of 8 metres, with their short side against the quay, pay a half-length charge. If a special agreement is reached, Shipping Companies with several vessels may be allocated a continuous quay length of at least 50 metres. In such cases charges are calculated per quay metre. Costs for fresh water are included in the quay charges.

LENGTH TARIFF	PRICE/DAY ¹	PRICE/MONTH ²	PRIS/YEAR ³
Per metre length/quay	28 SEK	540 SEK	3 600 SEK
Minimum charge per invoice	845 SEK		

Not¹ Charge per day (24 h period) for quay rental, max. 30 days.

Not² Charge per calendar month for quay rental, max. six months.

Not³ Charge per 12-month period for quay rental, according to specific agreement.

K/T-CLASSIFICATION

In cases where the Swedish National Maritime Museums has declared that a vessel has "K-classification" (a mark denoting cultural historical interest) and/or the Swedish Transport Agency has issued "T-classification" (Traditional Ship Classification) quay charges for the vessel are reduced by **60%**.

INNER CITY QUAYS AND TRAFFIC

ADDITIONAL FEES

Companies issued permits by Ports of Stockholm to run temporary business operations at the quay shall pay an additional fee. By temporary business operations is intended, for example, catering services or retail sales. The additional fee is charged according to each 24 h period of the permit utilised. Permits may be granted for a minimum period of one day (24 h period) up to a maximum of 45 days per calendar year. Invoices are issued retrospectively.

Additional fee tariff

530 SEK/day

INNER CITY QUAYS AND TRAFFIC

RECREATIONAL VESSELS

Port of Stockholm has a limited number of berths for privately owned non-commercial vessels. Please observe that all charges are excluding VAT.

BASIC CHARGES	PRICE/UNIT
Basic fee per month	106 SEK per utilized metre of the quay
Surcharge for buoy at Norr Mälarstrand	188 SEK /month
Surcharge free water & sewer (non residential)	7,85 SEK /metre l.o.a. and month
REBATES	
Discount for membership of an approved Ship's Association	10 % of the basic fee
Discount for vessels which have achieved "Stockholmsklass"	30 % of the basic fee
Discount for vessels which have achieved "K/T class"	30 % of the basic fee
Discount for double-positioned vessels	15 % of the calculated fee

Note: Vessels moored by the bow/stern are calculated at a maximum of 12 metres quay length.

RESIDENTIAL USAGE OF VESSELS

For owners who have been approved use of the vessel for residential purposes the following compulsory charges apply. Allocation of large or small quay is decided by Deputy Harbour Master in each case.

RESIDENTIAL FEES	PRICE/UNIT
Large vessel	1 458 SEK/month
Small vessel	1 165 SEK/month
Water and sewer fee	300 SEK/month
Waste fee	40 SEK/month

OTHER SHIPS



QUAY DUES FOR PRIVATE YACHTS

Port of Stockholm has a limited number of berths for larger private yachts for short-term access. The locations are; Skeppsbrokajen, Nybrokajen, Stadsgårdskajen, Hornsbergs Strand and at Strandvägen ("Pontoons at Strandvägen").

Below charges are applicable except for the pontoons at Strandvägen for which special fees and terms apply. See below. All prices excluding VAT.

VESSEL LENGTH (L.O.A.) IN METRES	PRICE/UNIT
0 - 20 metres	2 106 SEK/day
21 - 40 metres	3 159 SEK/day
41 - 60 metres	3 688 SEK/day
61 - 80 metres	4 211 SEK/day
81 - 100 metres	4 740 SEK/day
101 - 120 metres	5 265 SEK/day
> 120 metres	6 318 SEK/day

The charges include waste reception on condition that the Port has been notified in advance.

Other services such as ISPS, mooring, delivery of fresh water and electricity, can be found in section harbour services.

OTHER SHIPS

The term "Other ships" shall mean vessels not categorized according to previous sections and temporarily calling a dock operated by Ports of Stockholm. The fee is calculated per metre of vessel length (l.o.a.) and day.

Quay fee	28 SEK/metre and day
Minimum fee per call and invoice	845 SEK

Other services such as ISPS, mooring, delivery of fresh water and electricity, can be found in section harbour services.

OTHER SHIPS

STATE SHIPS ETC.

Harbour dues are not levied for Naval, Coast Guard, Customs, Sea Rescue, School vessels and vessels belonging to the Swedish Maritime Administration unless the vessels are being used for commercial purposes. Lay-days tariff, as per above will be levied when the port visit exceeds 72 hours and the vessel is not used directly for official duties within the port.

The lay-day tariff is payable per started 48 hour time period and is 25% of the current harbour dues for vessels

Other services such as ISPS, mooring, delivery of fresh water and electricity, can be found in section harbour services.

PONTOONS AT STRANDVÄGEN

The pontoons are situated at berths 17-18 at Strandvägen.

Booking and payment is made directly on site. Ports of Stockholm accepts card payments only for the payment of fees. Only yachts that have shipping agents can book and be invoiced by Ports of Stockholm. More information, booking and payment;

<http://www.portsofstockholm.com/stockholm/visiting-by-yacht/>

FEES	DESCRIPTION	PRICE EXCL. VAT	PRICE INCL. VAT
Pontoon fee	0-20 metre* ¹	2 106,40 SEK/day	2 633,00 SEK/day
	21-36 metre* ²	3 158,40 SEK/day	3 948,00 SEK/day
Temporary mooring* ³	0-3 hours	300,00 SEK	375,00 SEK
Rental of pontoon surface area for events	Entire pontoon	18 952,80 SEK/day	23 691,00 SEK/day
	Part of pontoon	5 264,80 SEK/day	6 581,00 SEK/day
Service fees	Solid waste (household waste)		Incl. in pontoon fee
	Fresh water		Incl. in pontoon fee
	Septic tank emptying		Incl. in pontoon fee
Electricity connection* ⁴	230 Volt	156,00 SEK/day	195,00 SEK/day
	16-32 Amp	264,80 SEK/day	331,00 SEK/day
	63 Amp	783,20 SEK/day	979,00 SEK/day

1* Smaller leisure craft (<12 metres l.o.a.) may not reserve pontoon berths and shall instead use other guest harbours in Stockholm.

2* Maximum mooring length is 36 metres and draught 3.5 metres. Larger sailing vessels may not moor at pontoons due to their potential wind capture area and shall instead use other bookable yacht quays.

3* Temporary mooring at pontoon berths may only take place for a maximum time of 3 hours. For such bookings a fixed fee is paid, regardless of vessel length.

4* Electricity fees are based on no electrician being required and connection instead being made by the vessel owner.



BOATMEN

This price list applies for mooring/unmooring work. The commission includes 2-4 boatmen according to the safety assessment of Ports of Stockholm. Boatmen in addition to this number will be charged for according to the "Service group fees".

Quay , per assignment	Mooring		Unmooring	
	Vessel length <130 metres	Vessel length >130 metres	Vessel length < 130 metres	Vessel length > 130 metres
Weekdays 07.00–16.00	2 225 SEK	4 450 SEK	2 225 SEK	4 450 SEK
Weekdays 16.00–07.00	3 235 SEK	6 470 SEK	3 235 SEK	6 470 SEK
Friday 16:00 – Monday 07:00	3 825 SEK	7 655 SEK	3 825 SEK	7 655 SEK
Buoy- or SeaWalk per assignment			Mooring	Unmooring
Weekdays 07.00–16.00			7 775 SEK	4 870 SEK
Weekdays 16.00–07.00			11 935 SEK	7 710 SEK
Friday 16:00 – Monday 07:00			14 405 SEK	8 945 SEK
Waitingtime > 30min, regardless of vessel length or quay/buoy/SeaWalk				
Weekdays 07.00–16.00			492 SEK/person and initiated hour	
Weekdays 16.00–07.00			871 SEK/person and initiated hour	
Friday 16:00 – Monday 07:00			897 SEK/person and initiated hour	

1. When warping a vessel along the same quay, only the tariff for mooring will be charged provided one rope is constantly in contact with the quay during the entire operation.

2. Assistance on Easter Saturday, Whit Saturday, Midsummer Eve, Christmas Eve, New Year's Eve and other Swedish holidays will be charged according to the tariff for weekend.

HARBOUR SERVICE

SERVICE GROUP

This price list applies for other work performed after agreement by the Port's service group in the Port of Stockholm.

Weekdays 07.00 - 16.00	492 SEK/person and initiated hour
Weekdays 16.00 - 07.00	871 SEK/person and initiated hour
Friday 16:00 – Monday 07:00	897 SEK/person and initiated hour
Work boat	750 SEK/person and initiated hour

ESTABLISHMENT OF TEMPORARY PERIMETER PROTECTION AND SECURITY GUARDS

For vessels covered by IMO port facility security code requirements that berth at quays at which there is normally no security monitoring, a minimum of one security guard is required for the entire duration of the call. The security guard is ordered via Ports of Stockholm and carries out the work of ensuring maritime security protection in accordance with the International Ship & Port facility Security code (ISPS). Passenger vessels carrying more than 12 passengers are dealt with separately, as a separate assessment is made as to whether additional security monitoring is required.

For vessels (not passenger vessels) covered by IMO port facility security code requirements that berth at ferry quays, Ports of Stockholm has assessed that separate security monitoring is required.

For vessels that are not covered by IMO port facility security code requirements that berth at quays that are covered by IMO port facility security code requirements, Ports of Stockholm has assessed that separate security monitoring is required.

Fee for installation of temporary security protection	3 112 SEK/call
Fee of provision of security guards when required (min. 4 hours)	440 SEK/hour and guard

The time is calculated from 0,5 hours before estimated time of arrival (eta) until 0,5 hours after the vessels actual departure. The prices and terms are also applicable for other types of security services.

HARBOUR SERVICE

ID CARDS & KEYS

In accordance with the regulations of the Swedish Transport Agency regarding ISPS, a competence examination is required for personnel residing within the restricted port area. After the [application](#) is approved, the following prices apply for issuing ID-cards. The prices also apply for issuing ID cards for tenants.

Issuing of Port of Stockholm ID card	300 SEK per ID
Tenants using external cards in the Ports system	50 SEK per application
Surcharge for issued but not picked up ID card	300 SEK per ID
Surcharge for loss of or not returned or damaged ID card	500 SEK per ID

Surcharge at loss of ID card will be debited in addition to the cost of issuing a new ID.

Application above includes registration of user, changes of personal information for the card as well as changes of the security classification for a person or tenant. The cost will be debited yearly in January.

KEYS

In case of a lost key(s) or if the key is not returned after an assignment, an amount of 500 SEK will be charged. Personnel will also be held responsible for any damage or loss as a result from the loss.

HARBOUR SERVICE

LOCK DUES

For safety reasons it is as from 1 January 2015 only possible to pay lock dues/purchase lock cards by bank card (i.e. no cash payment accepted).

HAMMARBY LOCK

For the passage of leisure boats in the direction of Saltsjön, a fee per passage and vessel is levied. The amount must be paid at the time of passage unless a valid Season ticket is presented.

Fee	200 SEK (incl. VAT)
-----	----------------------------

For commercial vessels no fee is levied.

There is no fee for canoes or kayaks.

KARL JOHAN LOCK

The Karl Johan lock is closed due to the rebuilding of Slussen and is estimated to reopen in 2020-2021.

SEASON TICKET

Season ticket can be purchased both by leisure and commercial vessels. The ticket which only can be used for the specific vessel mentioned in the application admits an unlimited number of lockage during normal working hours. The ticket must be presented to the personnel on request at each passage through the lock.

Price when bought at the lock	900 SEK (incl. VAT)
Price when bought from the Ports of Stockholm website	800 SEK (incl. VAT)

ADDITIONAL REGULATIONS

Prices for lock passage at times other than ordinary opening times are quoted upon request.

The same tariff is levied for leisure boats that are towed as for self-propelled vessels.

The Port bears no responsibility for any damage incurred in connection with passage through the locks, other than in cases where Port employees are found to have been negligent. Remuneration in every case is limited to the direct damage incurred and there is no entitlement to claim for loss of earnings/profit or other indirect damages.

Passage of canoes or similar is only admitted when lockage can be performed safely with regard to other traffic.

HARBOUR SERVICE

DELIVERY OF FRESH WATER

The following tariffs apply for vessels that do not have a separate agreement with Ports of Stockholm. Delivery of fresh water is done according to two different principles. At a berth where the water is delivered from a fire hydrant with a water meter, the customer is charged as per delivered quantity. At berths where it is not possible to measure the quantity delivered, a special agreement can be made where a fixed charge per month will be debited instead. In addition, the customer also have to pay for the cost of a water meter.

DELIVERY FROM FIRE HYDRANT	PRICE/UNIT
Price per started m ³	12,76 SEK/ m³
Price per started m ³ after agreement	11,50 SEK/ m³
Minimum charge per delivery	1 500 SEK
Surcharge for delivery outside normal working hours, weekdays 16:00-07:00, weekends and holidays as well as for waitingtime > 30 min	Charges as listed for the Service Group

The minimum charge also applies when ordered freshwater delivery is cancelled less than 24 hours before arrival.

DELIVERY WITHOUT MEASURING QUANTITY	PRICE/UNIT
Basic fee	342 SEK/month
Pontoon with a drain for sewage disposal	1 087 kr/month
Pontoon without a drain for sewage disposal	466 kr/month

TERMS AND CONDITIONS OF SUPPLY

The customer must follow the instructions provided by the Ports of Stockholm personnel with regard to the supply of water and must also provide the necessary assistance to receive the materials aboard the vessel and ashore.

The customer must ensure that the vessel's water tanks have sufficient venting capacity in relation to the supply capacity and that the tanks and coupled tubing are in such condition that these will not result in damage to the equipment.

The water hydrants may only be used for the customer's own vessel operations.

The key to the water hydrant provided by Ports of Stockholm must be returned when the water supply delivery has been completed. Remuneration for a lost or damaged water hydrant key must be made by the customer in the form of payment of the equivalent cost of ordering and manufacturing a new replacement key. The customer is not allowed to use their own tools or keys to access a water hydrant and must only use the water hydrant with a water hydrant key supplied by Ports of Stockholm.

In each instance the customer must provide information about the volume of the supply in accordance with Ports of Stockholm's instructions. If there is leakage in the customer's facility or in other instance of unusual volume of supply a supplementary fee for the unusual volume of supply may be charged.

During connection, use or other instance the customer is not permitted to cause damage to the water hydrant or other property administered by Ports of Stockholm. Ports of Stockholm accepts no liability for damage incurred by the customer in connection with the supply of fresh water or other instance other than when a Ports of Stockholm employee has been guilty of negligence. Damage compensation in every case is limited to the direct damage only and there is no entitlement to compensation for loss of income or other indirect damage.

The customer is also bound by the corresponding liabilities and limitations that apply to the property owner in accordance with the Stockholm Vatten AB general provisions for use of communal water and drainage facilities in Stockholm and Huddinge (Allmänna bestämmelser för brukande av den allmänna vatten- och avloppsanläggningen (ABVA) i Stockholm och Huddinge).

SUPPLY OF ELECTRIC POWER TO VESSELS

The following prices apply for vessels with no special agreement with Ports of Stockholm.

The Port of Stockholm provides electric power (green electricity) to vessels in port after considering each application. The following prices apply for the supply of electric power including energy tax, fees of power main and power certificate, with the exception of self-connected electricity at the pontoons at Strandvägen.

ELECTRIC POWER	PRICE/UNIT
Price per started kWh	1,47 SEK/kWh
Minimum charge	395 SEK
Installation and connection work	Ports of Stockholm's cost price

TERMS AND CONDITIONS OF SUPPLY

The Port/Supplier supplies electricity to the Customer via a low voltage grid and has no power grid concession for the electricity grid. As the Port/Supplier has neither a power grid concession or is a commercial provider of electricity in accordance with the legal definition of the term (1997:857) the statutory provisions do not apply, for example with regard to the obligations of electricity providers or the obligation to supply electricity from different electricity providers. Instead the terms in this price list apply, in addition to the written terms agreed between the respective parties.

The purchaser must comply with the instructions provided by Port personnel with regard to the supply of electrical current and must provide the assistance required to transfer the necessary materials aboard the vessel and ashore.

The purchaser must provide details of the amount of consumption in accordance with the instructions provided by the Port.

The customer is responsible for connection to the electricity connections of the Supplier in accordance with the instructions provided by the Supplier. The Supplier bears no cost for connection, installation or maintenance and is not responsible in any other way for the Customer's electricity connection.

The Customer is responsible for ensuring that the electricity connection is secured under lock and key to prevent unauthorised use.

The Customer may not transfer electricity supply rights to another and may not either transfer electricity to another. In the event of the Customer transferring electricity to another -without having first obtained written consent from the Supplier -the Supplier has the right to immediately terminate the supply of electricity to the Customer.

The Port bears no responsibility for damages that may be incurred by the purchaser in connection with the supply of electrical current, other than in cases where Port personnel are found to have been negligent. Remuneration in every case is limited to the direct damage incurred and there is no entitlement to claim for loss of earnings/profit or other indirect damages.

For electricity agreements that are valid until further notice or where no specific time period is specified the Customer must provide 30 days advance notification of termination of the agreement. The Port/Supplier has an obligation to supply electricity to the Customer during the period that the Customer has valid permission from the Port to berth at a quay area at the Port where electricity provision to the vessel is available and where the Customer fulfils payment obligations to the Port.