

Cruise Liners Prices and terms 2023

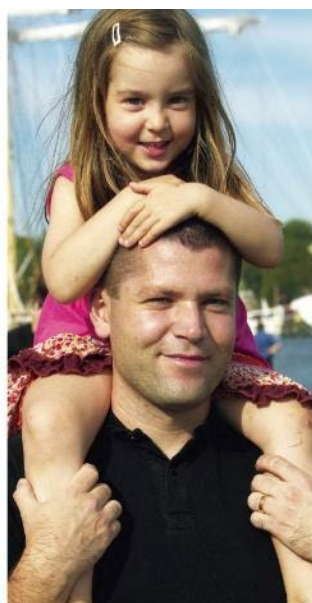
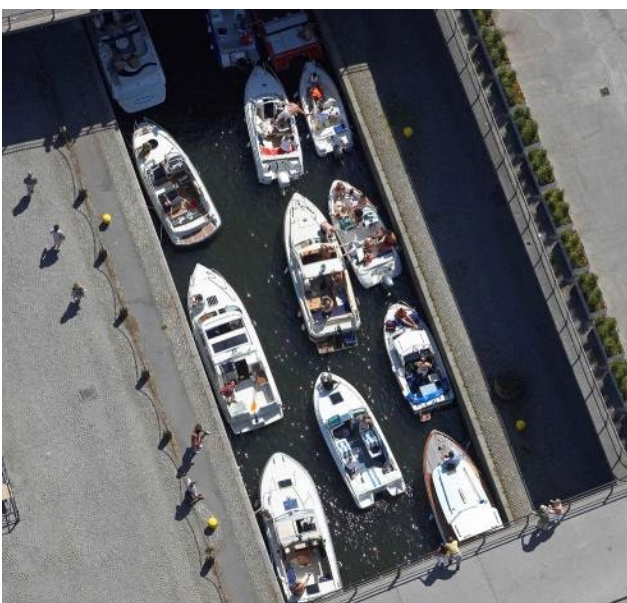
Ports of Stockholm

(Stockholm/Nynäshamn/Kapellskär)

Version 2023-04-21

Adjustments may be made to the dues stated in the price list during 2023 when new Swedish Transport Agency regulations enter into force as a result of the implementation of Directive (EU) 2019/883 of the European Parliament and of the Council of 17 April 2019 on port reception facilities for the delivery of waste from ships.

From 2023 onwards, electricity prices will be published in a separate price list on Ports of Stockholm's website <https://www.stockholmshamn.se/>





Contents

1	Contact	3
2	General terms and conditions	3
2.1	Invoicing principles	4
2.2	Booking policy.....	5
3	Cruise Liners.....	6
3.1	Harbour dues	6
3.1.1	Terms for dues and rebates.....	7
4	Harbour services	8
4.1	Security package	8
4.1.1	Terms and conditions	8
4.2	Boatmen	8
4.3	Delivery of freshwater in the Port of Stockholm.....	8
4.4	Waste Fees	9



1 Contact

International Cruise Traffic	Port and Traffic Control - BTC
Stefan Scheja +46 (0)8-670 28 13 +46 (0)70-770 28 13 stefan.scheja@portsofstockholm.com	+46 (0)8-670 28 10 btc@portsofstockholm.com

2 General terms and conditions

Ports of Stockholm has operations in several ports and annually issues 5 price lists;

- Price List for International Cruise Liners (in accordance with Swedish Maritime Administration regulations, SJÖFS 2021:1, 8 §)
- Price List for the Port of Kapellskär
- Price List for the Port of Stockholm
- Price List for the Port of Nynäshamn
- Price List for the Port of Stockholm Norvik

All prices stated are valid from 1 January until further notice, however at the latest until 31 December in the year of issue. Ports of Stockholm reserves the right to revise price lists at any time, and current price lists are always available on Ports of Stockholm's website, <http://www.portsofstockholm.com>.

According to Swedish Maritime Administration regulations (SJÖFS 2013:4) the Port of Stockholm, Port of Kapellskär and Port of Nynäshamn are classed as public ports. In accordance with Swedish Law (1981:655) governing certain tariffs at public ports, Ports of Stockholm has the right to charge dues if quays, jetties or similar facilities within the port area that belong to the port owner have been called at or utilised.

Harbour dues, according to a fixed rate as set out in this price list, or according to special agreements, are payable for vessels calling at or leaving public port areas and for goods, passengers and vehicles accompanying these vessels.

For comprehensive details of terms and conditions please refer to Ports of Stockholm's Port Regulations and Ordinance information, which is available on Ports of Stockholm's website, <http://www.portsofstockholm.com>.

Invoicing of harbour dues according to this price list occurs after the vessel's application, which the vessel's master, ship owner or representative for any of these shall submit in accordance with Ports of Stockholm's Port Regulations and Ordinance instructions.

When the vessel is exempt from the obligation of submitting a vessel application, the vessel's master shall submit to Ports of Stockholm the data necessary to establish the amount of the harbour dues. Special regulations apply to vessels with permanently allocated berths. Information about the goods loaded or unloaded shall be submitted to Ports of Stockholm four (4) days at the latest after the completed loading or unloading. Ports of Stockholm is entitled to demand provision of any information necessary to



satisfy the requirements of Swedish Authorities, or information necessary to establish the amount of harbour dues, or to satisfy other needs of Ports of Stockholm for information, such as to facilitate logistics planning.

Harbour dues charged according to GT (Gross Tonnage) are based on GT in accordance with Lloyd's Register (1969 measurement regulations), or alternatively the submitted Tonnage Certificate.

Harbour dues charged by the day are based on a time period beginning and ending 00:00 – 24.00, unless otherwise stated.

In the event that Swedish Authorities decree that special tariff provisions shall be levied for the vessels of specific nations or for specific types of vessels, these provisions will apply unreservedly.

Ports of Stockholm's port facilities are approved by the Swedish Transport Agency as compliant with maritime and port security legislation. This means that various types of security measures are implemented depending on the prevailing security threat level. Ports of Stockholm may agree specific contracts with shipping companies/other companies using the port facilities regarding security measures for security threat level 1, and how such measures shall be financed. For elevated security threat levels, Ports of Stockholm may implement additional security fees, based on the actual costs incurred due to the elevated security protection measures. Shipping companies operating year-round scheduled services must agree a specific contract with Ports of Stockholm regarding maritime and port security.

Ports of Stockholm is a member of the Ports of Sweden organisation and implements Ports of Sweden General Conditions 1989 for terminal operations.

This price list is issued in Swedish with an English translation. In the event of inconsistencies between the Swedish and English versions, the Swedish version shall prevail.

2.1 Invoicing principles

The invoiced amount is rounded-up to the nearest whole Swedish Crown (SEK). Invoiced amounts must be paid to Ports of Stockholm 20 days at the latest after the date of invoice, unless otherwise agreed. In the event of late payment, a statutory interest rate will be debited in accordance with Swedish Law (1975:635). A remuneration fee for issuing a written reminder will be debited in each instance in accordance with Swedish legislation governing the remuneration of collection expenses (SFS 1981:739). VAT will be added on all charges in accordance with Swedish law, unless the business or the vessel is exempt from VAT or it is otherwise stated that the prices include VAT. Requirements for advance payment may apply.

As part of Ports of Stockholm's efforts to minimise environmental effects, invoices may be issued by email. Please send your company name, customer number and email address to debitering@stockholmshamn.se. Invoices will then be sent to the stated email address.



2.2 Booking policy

Booking requests are handled on "first come, first served" basis. When a request is received, Ports of Stockholm will preliminary confirm an available quay if available, for the requested period of time. Final allocation of quays are made in the beginning of the year before the cruise season begins, and in case of any changes to the preliminary quay, Owners agent will be informed of the new details

Ports of Stockholm reserves the right to at any time change the allocated quay.



3 Cruise Liners

3.1 Harbour dues

Description	Vessel dues FHA *1	Frequency rebate *2
Quay	Price/unit	Rebate/unit
Stadsgården 160/167 and Skeppsbron 105	2.45 SEK/GT	-0.35 SEK/GT
At buoy on Strömmen Stockholm	1.23 SEK/GT	-0.18 SEK/GT
All other quays Stockholm, Nynäshamn or Kapellskär	2.41 SEK/GT	-0.35 SEK/GT
SeaWalk Nynäshamn	2.41 SEK/GT	-0.35 SEK/GT
At anchor Nynäshamn or Kapellskär	1.21 SEK/GT	-0.18 SEK/GT
Seasonal rebate *3 (February 1st – April 30th and October 1st – November 30th)	30 % of the calculated costs above incl. any frequency rebate	
Minimum charge per started period of 12 hours *1	12 000 SEK	
Lay-time tariff *4	25 % av FHA inkl. ev. frekvens- och/eller säsongrabatt per påbörjad dag	
Environmental rebate CSI (SO_x, NO_x och CO₂) or ESI *5		
CSI points	ESI points	Rebate/unit
45 – 47.9p	50 – 52.9p	-0.01 SEK/GT
48 – 50.9p	53 - 55.9p	-0.02 SEK/GT
51 – 53.9p	56 - 59.9p	-0.03 SEK/GT
54 – 56.9p	60 - 62.9p	-0.04 SEK/GT
57 – 59.9p	63 - 66.9p	-0.05 SEK/GT
60 – 62.9p	67 - 69.9p	-0.06 SEK/GT
63 – 65.9p	70 - 72.9p	-0.07 SEK/GT
66 – 68.9p	73 - 76.9p	-0.08 SEK/GT
69 – 71.9p	77 - 79.9p	-0.09 SEK/GT
72 – 74.9p	80 - 82.9p	-0.10 SEK/GT
75 – 77.9p	83 - 86.9p	-0.14 SEK/GT
78 – 80.9p	87 - 89.9p	-0.15 SEK/GT
81 – 83.9p	90 - 92.9p	-0.16 SEK/GT
84 – 86.9p	93 - 96.9p	-0.17 SEK/GT
87 – 90.0p	97 – 100.0p	-0.19 SEK/GT



Passenger tariff *6	Stadsgården 160/167 and Skeppsbron 105	38,67 SEK/pass
	At anchor on Strömmen Stockholm	38,67 SEK/pass
	All other quays Stockholm	37,93 SEK/pass
	Nynäshamn & Kapellskär	17,39 SEK/pass
Source separated waste rebate Stockholm *7		-6,51 SEK/pass
Security package		See Harbour services
T/A equipment *8	Vessels ≤ 100 max passengers	5 656 SEK/TA
	Vessels > 100 max passengers	28 279 SEK/TA

3.1.1 Terms for dues and rebates

- *1 Harbour dues for vessels are levied each time a vessel puts into port. The harbour dues for the vessel include the depositing of waste generated by the vessel in accordance with applicable laws and regulations. If notification has not been made within the prescribed time prior to arrival or other breaches against current regulations, the additional costs incurred can be debited. In cases where cruise liners anchor outside of the public port area and tender passengers to a quay, pier or equivalent Ports of Stockholm facility “At anchor Nynäshamn or Kapellskär” are charged according to the GT of the cruise liner. In case the total of vessel dues including frequency and/or seasonal rebates is lower than the minimum charge, the minimum charge will be debited per start of 12 hours.
- *2 If a cruise liner belonging to the same shipping company (operating under the same brand name) calls at any of the ports more than ten times during a season, the harbour dues will be reduced with these amounts from the eleventh call during the same season.
- *3 If a cruise vessel calls at Port of Stockholm during these periods, the harbour dues will be reduced by this amount.
- *4 A lay-time tariff is always payable 48 hours after the vessel has put into port with 25 % of the Harbour dues. The lay-day tariff is levied when caused by conditions that the Port of Stockholm cannot prevail over. The tariff is calculated on the net of the total debited harbour dues (Harbour dues, Frequency rebate and Seasonal rebate).
- *5 Ports of Stockholm offers environmental rebates for vessels affiliated with either CSI (Clean Shipping Index) or ESI (Environmental Ship Index). For CSI rebate, the index score is calculated as the total sum of the allocated/verified points in the Sox/PM, NOx and CO2 categories. Vessels that are not operating regular liner services must request the rebate when submitting the ship’s notification form and for the CSI rebate send a copy of the certificate together with the ship’s notification form. Ports of Stockholm also reserves the right to request additional documentation supporting the stated ESI score. When a vessel is at buoy in Stockholm or at anchor in Nynäshamn or Kapellskär the CSI/ESI rebate will be reduced with 50%.
- *6 Passenger fee is applicable for each arriving passenger.
- *7 Cruise liners that offload separated waste in accordance with the requirements in “Waste Instructions for Ports of Stockholm” receives a discount per passenger. The waste instruction is available on Ports of Stockholm’s website, <http://www.portsofstockholm.com/prices>
- *8 Applied in case of Turn Around.



4 Harbour services

4.1 Security package

Ports of Stockholm offer security services in port including security equipment and personnel. Categories and prices are listed below. This service is mandatory when ship is performing Turn Around. When in need of Explosive Detection Dogs for use within the port facility this has to be ordered via Ports of Stockholm using the Security order form.

Passenger X-ray* ¹	4 056 SEK/package and hour
Baggage X-ray* ²	2 247 SEK/package and hour
Additional Security Officers* ³	524 SEK/officer and hour
Explosive Detection Dogs* ⁴	879 SEK/dog and hour

*¹ Security checks of passengers and hand luggage which consists of 4 security officers, 1 baggage X-ray, 1 metal arch and 1 handheld detector.

*² Security checks of luggage which consists of 2 security officers and 1 baggage X-ray.

*³ Extra security officers for security duties related to the ISPS code within the port facility.

*⁴ Explosive detection dog with security officer for explosive detection duties within the port facility.

4.1.1 Terms and conditions

- Security package can be ordered at sakerhet@stockholmshamn.se
- The order must be completed at least 7 days prior ETA of call.
- Minor changes to an order are allowed up to 24 hours prior ETA of call and has to be confirmed by Securitas before approved. Ports of Stockholm has the right to transfer any charges due to large changes or cancellations back to the organization that has completed the order.
- A minimum of two hours is always charged per category and occasion. Additional time is charged in whole hours.
- All prices excluded VAT.
- Prices can only be guaranteed under MARSEC 1.

4.2 Boatmen

See pricelist for each port.

4.3 Delivery of freshwater in the Port of Stockholm

Fresh water	13.50 SEK/m ³
-------------	--------------------------



4.4 Waste Fees

Sewage* ¹	15.17 SEK/m ³
Sludge* ¹	1 340 SEK/m ³
Scrubber waste	1 500 SEK/tonnes

*¹ 100 m³ sewage and 12 m³ sludge is included in the harbour dues for vessels moored at quay. For vessels moored at a buoy, prices are stated on request.