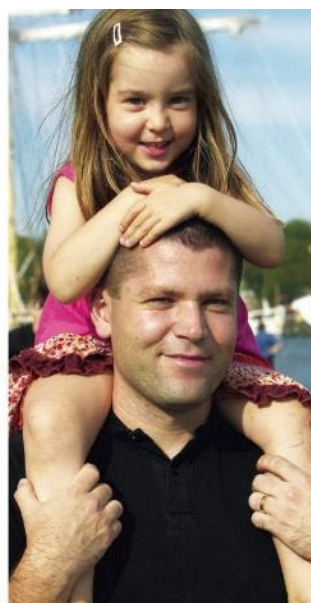
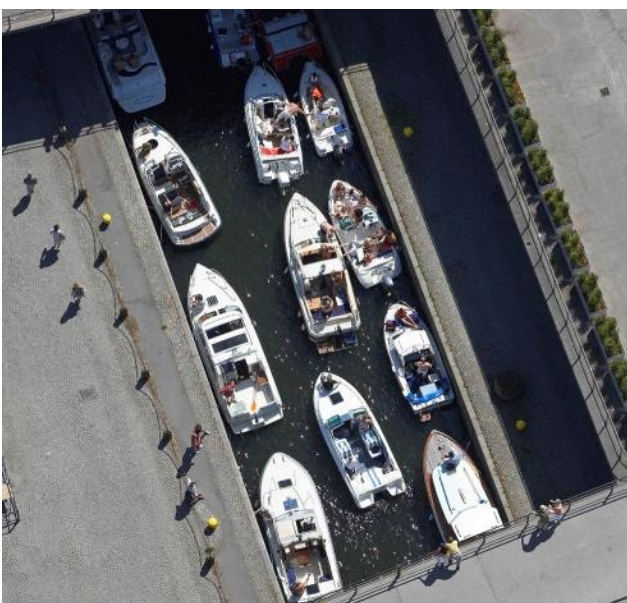


Prices and terms 2024

Port of Stockholm

Version 2024-01-01





Innehåll

1	Contact	4
2	General Terms and Conditions	4
2.1	Invoicing Principles	6
3	Merchant Shipping	7
3.1	Vessel dues	7
3.2	Cargo Dues	7
3.3	Terms for Vessel and Cargo Dues	8
3.4	Environmental Rebates.....	9
3.5	Lay-days Tariff	10
3.6	Passing Vessels	10
3.7	Vessels to be Repaired.....	10
3.8	State Ships etc.....	10
3.8.1	Swedish State Ships etc.	10
3.8.2	Foreign State Ships etc.	11
3.9	Quay Storage.....	11
3.10	Waste Fees	12
4	Inner City Quays and Traffic.....	12
4.1	Port and Archipelago Traffic.....	12
4.1.1	Vessel Dues.....	12
4.1.2	Environmental Rebates	12
4.1.3	Quay Charges.....	13
4.1.4	K/T-Classification	13
4.1.5	Additional Fees	13
4.2	Recreational Vessels	14
4.2.1	Residential Usage of Vessels	14
4.3	Private Yachts.....	15
4.4	Other Ships.....	15
4.5	Pontoons at Strandvägen	16
5	Harbour Services	17
5.1	Boatmen	17
5.2	Service Group.....	17
5.3	Establishment of Temporary Perimeter Protection and Security Guards.....	18
5.4	Security Package.....	18
5.4.1	Terms and Conditions.....	19
5.5	ID Cards & Keys	19
5.5.1	Keys	19
6	Lock Dues.....	20
6.1	The Hammarby Locks.....	20



6.1.1	Lock fee for commercial traffic.....	20
6.1.2	Lock fee for pleasure boats	20
6.2	The Victoria Locks	20
6.3	Additional Regulations	21
7	Delivery of Freshwater	22
7.1	Terms and Conditions of Supply	22



1 Contact

Port and Traffic Control	Season tickets at our locks
+46 (8)-670 28 10 btc@portsofstockholm.com	Peter Widell slusskort@portsofstockholm.com
Ferries and cargo	Inner City Quays and Traffic
Nicklas Ebersson +46 (8)-670 26 73 +46 (0)70-770 26 73 nicklas.ebersson@portsofstockholm.com	Archipelago traffic Recreational vessels Yachts www.portsofstockholm.com/stockholm/berts/
International Cruise Traffic	Other questions
Stefan Scheja +46 (8)-670 28 13 +46 (0)70-770 28 13 stefan.scheja@portsofstockholm.com	Johan Wallén +46 (8)-670 26 74 +46 (0)70-770 26 74 johan.wallén@portsofstockholm.com
Port portal (granted access required)	
https://hamnportal-sh-mobil.stockholmshamn.se/	

2 General Terms and Conditions

Ports of Stockholm has operations in Kapellskär, Stockholm and Nynäshamn and annually issues five price lists;

- Price List for International Cruise Liners (in accordance with Swedish Maritime Administration regulations (SJÖFS 2021:1, 8 §)
- Price List for Port of Kapellskär
- Price List for Port of Stockholm
- Price List for Port of Nynäshamn
- Price List for Stockholm Norvik Port

All prices stated are valid from 1 January until further notice, however at the latest until 31 December in the year of issue. Ports of Stockholm reserves the right to revise price lists at any time, and current price lists are always available on www.portsofstockholm.com.

According to Swedish Maritime Administration regulations (SJÖFS 2013:4) Port of Stockholm's ports are classed as public ports. In accordance with Swedish Law (1981:655) governing certain tariffs at public ports, Ports of Stockholm has the right to charge dues if quays, jetties or similar facilities within the port area that belong to the port owner have been called at or utilised.



Harbour dues, according to a fixed rate as set out in this price list, or according to special agreements, are payable for vessels calling at or leaving public port areas and for goods, passengers and vehicles accompanying these vessels.

For comprehensive details of terms and conditions please refer to Ports of Stockholm's Port Regulations and Ordinance information, which is available on www.portsofstockholm.com.

Invoicing of harbour dues according to this price list occurs after the vessel's application, which the vessel's master, ship owner or representative for any of these shall submit in accordance with Ports of Stockholm's Port Regulations and Ordinance instructions.

When the vessel is exempt from the obligation of submitting a vessel application, the vessel's master shall submit to Ports of Stockholm the data necessary to establish the amount of the harbour dues. Special regulations apply to vessels with permanently allocated berths. Information about the goods loaded or unloaded shall be submitted to Ports of Stockholm four (4) days at the latest after the completed loading or unloading. Ports of Stockholm is entitled to demand provision of any information necessary to satisfy the requirements of Swedish Authorities, or information necessary to establish the amount of harbour dues, or to satisfy other needs of Ports of Stockholm for information, such as to facilitate logistics planning.

Harbour dues charged according to GT (Gross Tonnage) are based on GT in accordance with Lloyd's Register (1969 measurement regulations), or alternatively the submitted Tonnage Certificate.

Harbour dues charged by the day are based on a time period beginning and ending 00.00-24.00, unless otherwise stated.

In the event that Swedish Authorities decree that special tariff provisions shall be levied for the vessels of specific nations or for specific types of vessels, these provisions will apply unreservedly.

Ports of Stockholm's port facilities are approved by the Swedish Transport Agency as compliant with maritime and port security legislation. This means that various types of security measures are implemented depending on the prevailing security threat level. Ports of Stockholm may agree specific contracts with shipping companies/other companies using the port facilities regarding security measures for security threat level 1, and how such measures shall be financed. For elevated security threat levels, Ports of Stockholm may implement additional security fees, based on the actual costs incurred due to the elevated security protection measures. Shipping companies operating year-round scheduled services must agree a specific contract with Ports of Stockholm regarding maritime and port security.

Ports of Stockholm is a member of the Ports of Sweden organisation and implements Ports of Sweden General Conditions 1989 for terminal operations.

This price list is issued in Swedish with an English translation. In the event of inconsistencies between the Swedish and English versions, the Swedish version shall prevail.



2.1 Invoicing Principles

The invoiced amount is rounded-up to the nearest whole Swedish Crown (SEK).

Invoiced amounts must be paid to Ports of Stockholm 20 days at the latest after the date of invoice, unless otherwise agreed. In the event of late payment, a statutory interest rate will be debited in accordance with Swedish Law (SFS 1975:635). A remuneration fee for issuing a written reminder will be debited in each instance in accordance with Swedish legislation governing the remuneration of collection expenses (SFS 1981:739).

VAT will be added on all charges in accordance with Swedish law, unless the business or the vessel is exempt from VAT or it is otherwise stated that the prices include VAT.

Requirements for advance payment may apply.

As part of Ports of Stockholm's efforts to minimise environmental effects, invoices may be issued by email. Please send your company name, customer number and email address to debitering@stockholmshamn.se. Invoices will then be sent to the stated email address.



3 Merchant Shipping

3.1 Vessel dues

Tariff	Description	Price/unit
Basic fee *1		4.84 SEK/GT
	When calling quay not belonging to Ports of Stockholm or when exempted for waste delivery *2	4.36 SEK/GT
	Minimum charge	2,420 SEK/call

ISPS-fees *3	see Establishment of temporary perimeter protection and security guards	
--------------	---	--

3.2 Cargo Dues

Goods code (Tarin) *4	Description	Price/unit
1001-1005	Grain	13.05 SEK/ton
1703	Molasses	13.05 SEK/ton
2517	Sand and gravel etc.	3.48 SEK/ton
2523	Cement	13.05 SEK/ton
2701-2704	Cole and Coke etc.	25.10 SEK/ton
2710 11 11 - 2710 11 90	Low viscosity oils (Petrol etc.)	31.02 SEK/ton
2710 19 11 - 2710 19 29	Medium viscosity oils (Paraffin etc.)	23.47 SEK/ton
2710 19 31 - 2710 19 69	Heavy oils	23.47 SEK/ton
2711 11 00	LNG	39.38 SEK/ton
4401-4407, 9602	Timber, Pellets, Woodchips	11.51 SEK/ton
4701-4708	Pulp, Waste paper	11.51 SEK/ton
4801-4808	Paper and Board	11.51 SEK/ton
6810	Building blocks etc.	13.05 SEK/ton
Container fee *5		500 SEK/cont
Passenger fee *6		24.08 SEK/pax
Vehicle fee *7	Private car	31.91 SEK/vehicle
	Cargo vehicle	25.32 SEK/lm
	Bus	55.72 SEK/ vehicle

3.3 Terms for Vessel and Cargo Dues

- *1 Port fees are charged each time a ship calls at Ports of Stockholm. A separate fee is charged for waste for ships moored at the quay as specified in Chapter 3.10. If advance vessel notification is not made within the prescribed time window, or if there are other deviations from the applicable regulations, Ports of Stockholm may charge for any additional costs incurred. If a vessel calls at the port and uses a dock or pier, which does not belong to Ports of Stockholm, the harbour dues listed above will be reduced. The same discount applies to vessels which are lying at a buoy without calling into berth within the port area, see chapter 2 for more information. The fee is always calculated on the GT without regard to possible deduction for segregated ballast tanks and calculated on a minimum of 500 GT. For barges, the vessel dues are calculated on the gross tonnage of the barge excluding tugboat/pusher. For dues that apply for international cruise traffic, refer to the separate price list.
- *2 If the relevant regulatory agency has granted a ship making frequent and regular calls an exemption from mandatory waste delivery, the waste fees do not apply.
- *3 For vessels covered by IMO port facility security code requirements that berth at quays at which there is normally no security monitoring. See further information at section Establishment of temporary perimeter protection and security guards.
- *4 Dues on goods are debited for goods that are unloaded or loaded from or onto vessels within the port area. Half of the dues on goods will be levied for goods loaded or unloaded without being moved across a quay or jetty owned by Ports of Stockholm or when lightering is performed at a buoy.
- The following conversion factors apply for timber:
- Round timber 850 kg/m³, solid volume under bark
 - Sawn wood, import, 700 kg/m³, solid volume
 - Sawn wood, export, 550 kg/m³, solid volume
- Exceptions from dues on goods;
- ship's requisites and provisions,
 - containers, platforms or other load carriers of a permanent character intended as a means of transport and which do not make up an independent commodity,
 - goods that are unloaded or loaded from or onto a vessel as set out in "State ships".
- *5 Fee for each loaded container being loaded or discharged.
- *6 Passenger fee is applicable for each embarking and disembarking passenger.
- *7 Vehicle fee is applicable for each vehicle in service that accompanies a vessel to or from the port.



3.4 Environmental Rebates

Ports of Stockholm offers environmental rebates for vessels affiliated with either CSI (Clean Shipping Index) or ESI (Environmental Ship Index). For CSI rebate, the index score is calculated as the total sum of the allocated/verified points in the SO_x/PM, NO_x and CO₂ categories. Vessels that are not operating regular liner services must request the rebate when submitting the ship's notification form and for the CSI rebate send a copy of the certificate together with the ship's notification form. Ports of Stockholm also reserves the right to request additional documentation supporting the stated ESI score. The rebates stated, are based on the "Basic fee" for vessel dues and in case of any reductions the environmental rebates will be reduced proportionally. The maximum environmental rebate may never exceed 10 percent of the port fees. In cases where the vessel is affiliated with both CSI and ESI, the choice of index is at the vessel owner's discretion.

CSI (SO _x , NO _x and CO ₂) or ESI		
CSI	ESI	
points	points	Rebate/unit
45 – 47.9	50 – 52.9	-0,01 SEK/GT
48 – 50.9	53 – 55.9	-0,02 SEK/GT
51 – 53.9	56 – 59.9	-0,03 SEK/GT
54 – 56.9	60 – 62.9	-0,04 SEK/GT
57 – 59.9	63 – 66.9	-0,05 SEK/GT
60 – 62.9	67 – 69.9	-0,06 SEK/GT
63 – 65.9	70 – 72.9	-0,07 SEK/GT
66 – 68.9	73 – 76.9	-0,08 SEK/GT
69 – 71.9	77 – 79.9	-0,09 SEK/GT
72 – 74.9	80 – 82.9	-0,10 SEK/GT
75 – 77.9	83 – 86.9	-0,14 SEK/GT
78 – 80.9	87 – 89.9	-0,15 SEK/GT
81 – 83.9	90 – 92.9	-0,16 SEK/GT
84 – 86.9	93 – 96.9	-0,17 SEK/GT
87 – 90.0	97 – 100.0	-0,19 SEK/GT



3.5 Lay-days Tariff

A lay-day tariff is applied when a vessel is docked for more than 48 hours at a quay belonging to Ports of Stockholm in total. A lay-day tariff is always payable for passenger vessels 48 hours after the vessels has put into port. The lay-day tariff is levied when caused by conditions that the Ports of Stockholm cannot prevail over.

The lay-day tariff is payable per started 48 hour time period and is **25%** of the current harbour dues for vessels.

3.6 Passing Vessels

Based on the regulations of the Swedish Maritime Administration (SJÖFS 2013:4) and by Swedish Law (1981:655), Ports of Stockholm has the right to charge vessels not only when they call into a berth or quay but also when passing through the Stockholm port area regardless of if the vessel called into a berth/quay or loaded/discharged goods, passengers or waste.

Price per passage	2.43 SEK/GT
Minimum fee	671 SEK/passage

3.7 Vessels to be Repaired

Vessels, putting into port solely for repairs at a shipyard situated within the Stockholm port area, are exempted from tonnage tariffs. However, a fee is payable when a quay or jetty owned by Ports of Stockholm is utilised or when the quay is used to load or unload goods from or to the vessel.

3.8 State Ships etc.

A separate fee for waste is charged according to chapter 3.10. If the quay needs to be cleared of snow or similar, this service will be charged. Other services such as ISPS, mooring, and delivery of fresh water, can be found in section harbour service.

3.8.1 Swedish State Ships etc.

Harbour dues are not levied for Swedish Naval, Coast Guard, Customs, Sea Rescue, School vessels and vessels belonging to the Swedish Maritime Administration unless the vessels are being used for commercial purposes. Lay-days tariff, as per above will be levied when the port visit exceeds 72 hours and the vessel is not used directly for official duties within the port.

The lay-day tariff is payable per started 48 hour time period and is 25% of the current harbour dues for vessels.



3.8.2 Foreign State Ships etc.

For foreign naval vessels, coast guard, customs, maritime rescue vessels that temporarily call at a quay managed by the Ports of Stockholm, the fee is calculated per metre of vessel length (loa) and each initiated 24 hour period.

Tariff	36 SEK/metre and initiated 24 hour
Minimum charge per call and invoicing occasion	1,070 SEK

3.9 Quay Storage

Goods/units that will be loaded or has been discharged from ferries/ro-ro vessels in the port will be debited Quay storage fees if left in the port more than 72 hours before loading or 72 hours after discharge. The fees will be debited the ferry/ro-ro liner company which has been or will be shipping the goods. The fees are calculated per initiated 24 hour period.

For storage of other types of cargo or other utilization of Ports of Stockholm port area please contact btc@portsofstockholm.com

	0-72 hours	Max 96 hours	96 hours or more *1
0-6 metre	No charge	83 SEK/unit and day	118 SEK/unit and day
6-15 metre	No charge	165 SEK/unit and day	236 SEK/unit and day
15 - metre	No charge	330 SEK/unit and day	472 SEK/unit and day

*1 The fee will be levied as from the 4th day.

3.10 Waste Fees

Waste fees are charged in accordance with the Swedish Transport Agency Regulations and General Advice (TSFS 2023:15) concerning delivery of waste from ships. If advance waste notification is not made within the prescribed time window, or if there are other deviations from the applicable regulations, Ports of Stockholm may charge for any additional costs incurred.

Fixed waste fee *1	26,600 SEK
Fixed waste fee rebate, ships (less than 20 000 GT or short sea shipping *2)	-13,300 SEK
Variable waste fee *1	0.10 SEK/GT
Variable waste fee rebate *3	-0.05 SEK/GT
Sewage *1	18.96 SEK/m ³
Sludge *1	1,427 SEK/m ³
Scrubber waste	1,598 SEK/ton

*1 For ships at the quayside, 12 m³ sludge is included. Where the quay has a fixed connection to the municipal waste network, 100 m³ sewage is included. For ships moored at buoys or at anchor, fees are available on request.

*2 Ports of Stockholm determine the definition of short sea shipping.

*3 Ships fulfilling the criteria specified in “Waste instructions for Ports of Stockholm” are eligible to receive a 50 percent variable waste fee rebate.

4 Inner City Quays and Traffic

4.1 Port and Archipelago Traffic

Port and archipelago traffic is generally defined as vessels not exceeding a gross tonnage of 500 tonnes operating passenger services (such as regularly scheduled sailings or charter services) within the Stockholm port area.

4.1.1 Vessel Dues

Dues for port and archipelago traffic vessels are charged as an annual fee per vessel per calendar year. Vessels not operating services during the period May-September pay a half dues tariff. Dues are non-refundable. Vessel dues include costs for passage through locks and offloading black and grey water (sewage) at any of Ports of Stockholm’s waste management stations.

Vessel > 12 x 4 metres	18,977 SEK/year
Vessel < 12 x 4 metres	9,489 SEK/year

4.1.2 Environmental Rebates

If the ship's main engine meets the requirements of IMO Tier III or is fully powered by electricity, a 50% discount on the vessel fee is obtained. In order to receive the discount, the shipping company must present a valid certificate from an independent party



approved by Ports of Stockholm no later than 1 October of the current year. Examples of certificates are an EIAPP certificate.

4.1.3 Quay Charges

Quay charges apply for the mooring of vessels or pontoons at quays administered by Ports of Stockholm. Charges are calculated according to length in metres. Bow-moored vessels not exceeding a width of 8 metres, with their short side against the quay, pay a half-length charge. If a special agreement is reached, shipping companies with several vessels may be allocated a continuous quay length of at least 50 metres. In such cases charges are calculated per quay metre. Costs for fresh water are included in the quay charges.

Length tariff	Price/day ^{*1}	Price/month ^{*2}	Price/year ^{*3}
Per metre length/quay	36 SEK	684 SEK	4,553 SEK
Minimum charge per invoice	1,070 SEK		

^{*1} Charge per day (24 h period) for quay rental, max. 30 days.

^{*2} Charge per calendar month for quay rental, max 6 months.

^{*3} Charge per 12-month period for quay rental, according to specific agreement.

4.1.4 K/T-Classification

In cases where the Swedish National Maritime Museums has declared that a vessel has “K-classification” (a mark denoting cultural historical interest) and/or the Swedish Transport Agency has issued “T-classification” (Traditional Ship Classification) quay charges for the vessel are reduced by 60 percent.

4.1.5 Additional Fees

Companies issued permits by Ports of Stockholm to run temporary business operations at the quay shall pay an additional fee. By temporary business operations is intended, for example, catering services or retail sales. The additional fee is charged according to each 24 h period of the permit utilised. Permits may be granted for a minimum period of one day (24 h period) up to a maximum of 45 days per calendar year. Invoices are issued retrospectively.

Additional fee	671 SEK/day
----------------	-------------



4.2 Recreational Vessels

Ports of Stockholm has a limited number of berths for privately owned non-commercial vessels. Please observe that all charges are excluding VAT.

Basic charges	Price/unit
Basic fee per month	134 SEK per utilized metre of the quay
Surcharge for buoy at Norr Mälärstrand	239 SEK/month
Surcharge free water & sewer (non residential)	13.68 SEK/metre l.o.a. and month
Rebates	
Discount for membership of an approved Ship's Association *1	10% of the basic fee
Discount for vessels which have achieved "K/T class" *1	30% of the basic fee
Discount for double-positioned vessels	15% of the calculated fee

Vessels moored by the bow/stern are calculated at a maximum of 12 metres quay length.

*1 To obtain these rebates the vessel owner must be able to produce certificate of sufficient ship insurance, drydocking and registration of the vessel in the Swedish Register of Shipping.

4.2.1 Residential Usage of Vessels

For owners who have been approved use of the vessel for residential purposes at Söder Mälärstrand the following compulsory charges apply. Allocation of large or small quay is decided by Deputy Harbour Master in each case.

Residential fees	Price/unit
Large quay	1,846 SEK/month
Small quay	1,473 SEK/month
Water and sewer fee	446 SEK/month
Waste fee	54 SEK/month



4.3 Private Yachts

Ports of Stockholm has a limited number of berths for larger private yachts for short-term access. The locations are; Skeppsbrokajen, Nybrokajen, Stadsgårdskajen, Hornsbergs Strand and at Strandvägen ("Pontoons at Strandvägen").

Below charges are applicable except for the pontoons at Strandvägen for which special fees and terms apply, see below. If a yacht is at anchor within the port area the below fees will be reduced by 50%. All prices excluding VAT.

Quay fee	Price/unit
Basic fee	6.50 SEK per GT and day
Minimum fee	4,132 SEK per day

Separate fees for waste is charged according to chapter 3.10.

See www.portsofstockholm.com for complete terms and ship's notification form.

Other services such as ISPS, mooring, delivery of fresh water and electricity, can be found in section harbour services.

4.4 Other Ships

The term "Other ships" shall mean vessels not categorized according to previous sections and temporarily calling a dock operated by Ports of Stockholm. The fee is calculated per metre of vessel length (l.o.a.) and day.

Quay fee	Price/unit
Quay fee	36 SEK/metre and day
Minimum fee per call and invoice	1,070 SEK

Other services such as ISPS, mooring, delivery of fresh water and electricity, can be found in section harbour services.

4.5 Pontoons at Strandvägen

The pontoons are situated at berths 17-18 at Strandvägen.

Ports of Stockholm accepts card payments only for the payment of fees. Only yachts that have shipping agents can book and be invoiced by Ports of Stockholm. More information, booking and payment, see www.portsofstockholm.com/yacht

Fees	Description	Price excl. VAT	Price incl. VAT
Pontoon fee	0-20 metres ^{*1}	1,038.40 SEK/day	1,298 SEK/day
	21-36 metres ^{*2}	1,983.20 SEK/day	2,479 SEK/day
Temporary mooring ^{*3}	0-3 hours	378.40 SEK	473 SEK
Rental of pontoon surface area for events	Entire pontoon	23,978.48 SEK/day	
	Part of pontoon	6,660.51 SEK/day	
Service fees	Solid waste (household waste)		Incl. in pontoon fee
	Freshwater		Incl. in pontoon fee
	Septic tank emptying		Incl. in pontoon fee
Electricity connection ^{*4}	230 Volt	See separate price list	
	16-32 Amp	See separate price list	
	63 Amp	See separate price list	

^{1*} Smaller leisure craft (<12 metres l.o.a.) may not reserve pontoon berths and shall instead use other guest harbours in Stockholm.

^{2*} Maximum mooring length is 36 metres and draught 3.5 metres. Larger sailing vessels may not moor at pontoons due to their potential wind capture area and shall instead use other bookable yacht quays.

^{3*} Temporary mooring at pontoon berths may only take place for a maximum time of 3 hours. For such bookings a fixed fee is paid, regardless of vessel length.

^{4*} Electricity fees are based on no electrician being required and connection instead being made by the vessel owner.

5 Harbour Services

Electricity prices are published in a separate price list at www.portsofstockholm.com.

5.1 Boatmen

This price list applies for mooring/unmooring work. The commission includes 2-4 boatmen according to the safety assessment of Ports of Stockholm. Boatmen in addition to this number will be charged for according to the "Service group fees".

Quay per assignment	Mooring		Unmooring	
	Vessel length < 130 metres	Vessel length >130 metres	Vessel length < 130 metres	Vessel length > 130 metres
Weekdays 07.00 – 16.00	3,068 SEK	6,137 SEK	3,068 SEK	6,137 SEK
Weekdays 16.00 – 07.00	4,415 SEK	8,829 SEK	4,415 SEK	8,829 SEK
Friday 16.00 – Monday 07.00	7,206 SEK	14,414 SEK	7,206 SEK	14,414 SEK
Buoy per assignment	Mooring		Unmooring	
Weekdays 07.00 – 16.00	9,280 SEK		9,280 SEK	
Weekdays 16.00 – 07.00	12,731 SEK		12,731 SEK	
Friday 16.00 – Monday 07.00	16,069 SEK		16,069 SEK	
Waiting time > 30min, regardless of vessel length, quay or buoy				
Weekdays 07.00 – 16.00	671 SEK/person and initiated hour			
Weekdays 16.00 – 07.00	1,189 SEK/person and initiated hour			
Friday 16.00 – Monday 07.00	1,225 SEK/person and initiated hour			

When warping a vessel along the same quay, only the tariff for mooring will be charged provided one rope is constantly in contact with the quay during the entire operation. Assistance on Easter Saturday, Whit Saturday, Midsummer Eve, Christmas Eve, New Year's Eve and other Swedish holidays will be charged according to the tariff for weekend.

5.2 Service Group

This pricelist applies for other work performed after agreement by the Ports of Stockholm's Service Group in the Port of Stockholm	
Weekdays 07.00–16.00	671 SEK/person and initiated hour
Weekdays 16.00–07.00	1,189 SEK/person and initiated hour
Friday 16.00 – Monday 07.00	1,225 SEK/person and initiated hour
Workboat – small	1,010 SEK/initiated hour
Workboat – large	1,625 SEK/initiated hour



5.3 Establishment of Temporary Perimeter Protection and Security Guards

For vessels covered by IMO port facility security code requirements that berth at quays at which there is normally no security monitoring, a minimum of one security guard is required for the entire duration of the call. The security guard is ordered via Ports of Stockholm and carries out the work of ensuring maritime security protection in accordance with the International Ship & Port facility Security code (ISPS). Passenger vessels carrying more than 12 passengers are dealt with separately, as a separate assessment is made as to whether additional security monitoring is required.

For vessels (not passenger vessels) covered by IMO port facility security code requirements that berth at ferry quays, Ports of Stockholm has assessed that separate security monitoring is required.

For vessels that are not covered by IMO port facility security code requirements that berth at quays that are covered by IMO port facility security code requirements, Ports of Stockholm has assessed that separate security monitoring is required.

Fee for installation of temporary security protection weekday 07.00-16.00	3,900 SEK/call
Fee for installation of temporary security protection other than above	6,900 SEK/call
Fee for provision of security guards when required (minimum 4 hours)	607 SEK/hour and guard

The time is calculated from 0.5 hours before estimated time of arrival (ETA) until 0.5 hours after the vessel's actual departure. The prices and terms are also applicable for other types of security services.

5.4 Security Package

Ports of Stockholm offers security services in port including security equipment and personnel. Categories and prices are listed below. This service is mandatory when ship is performing turnaround. When in need of explosive detection dogs for use within the port facility this has to be ordered via Ports of Stockholm using the Security order form.

Passenger X-ray *1	4,340 SEK/package and hour
Baggage X-ray *2	2,404 SEK/package and hour
Additional Security Officers *3	607 SEK/officer and hour
Explosive detection dogs *4	1,427 SEK/dog and hour

*1 Security checks of passengers and hand luggage which consists of 4 security officers, 1 baggage X-ray, 1 metal arch and 1 handheld detector.

*2 Security checks of luggage which consists of 2 security officers and 1 baggage X-ray.

*3 Extra security officers for security duties related to the ISPS code within the port facility.

*4 Explosive detection dog with security officer for explosive detection duties within the port facility.



5.4.1 Terms and Conditions

- Security package can be ordered at sakerhet@portsofstockholm.com.
- The order must be completed at least 7 days prior ETA of call.
- Minor changes to an order are allowed up to 24 hours prior ETA of call and has to be confirmed before approved. Ports of Stockholm has the right to transfer any charges due to large changes or cancellations back to the organisation that has completed the order.
- A minimum of two hours is always charged per category and occasion. Additional time is charged in whole hours.
- All prices excluding VAT.
- Prices can only be guaranteed under MARSEC 1.

5.5 ID Cards & Keys

In accordance with the regulations of the Swedish Transport Agency regarding ISPS, a competence examination is required for personnel residing within the restricted port area. After the application is approved, the following prices apply for issuing ID-cards. The prices also apply for issuing ID cards for tenants.

Issuing of Port of Stockholm ID card	363 SEK/ID
Tenants using external cards in the Ports system	60 SEK/application
Surcharge for issued but not picked up ID card	363 SEK/ID
Surcharge for loss of or not returned or damaged ID card	603 SEK/ID

Surcharge at loss of ID card will be debited in addition to the cost of issuing a new ID. Application above includes registration of user, changes of personal information for the card as well as changes of the security classification for a person or tenant. The cost will be debited yearly in January.

5.5.1 Keys

In case of a lost key(s) or if the key is not returned after an assignment, the same surcharge as for loss of ID card will be debited. Personnel will also be held responsible for any damage or loss as a result from the loss.



6 Lock Dues

For safety reasons it is only possible to pay lock dues/purchase lock cards by bank card (i.e. no cash payment accepted).

6.1 The Hammarby Locks

6.1.1 Lock fee for commercial traffic

As from 1 January 2024 commercial traffic pays a lock fee per passage. The lock fee for commercial traffic is exclusive of VAT.

Vessel up to 300 GT	750 SEK/passage
Vessel over 300 GT	3.04 SEK per GT/passage

Commercial vessels have the option of paying an annual fee of 300,000 SEK/vessel. The annual fee allows an unlimited number of passages per calendar year.

All vessels that are NOT pleasure boats – e.g. government ships, school ships – pay a fee according to the tariff for commercial traffic.

Ships equipped with "blue lights" - e.g. police, emergency services - pay no fee.

The lock fee for commercial traffic is invoiced monthly in retrospect. It is also possible to pay a one-off fee by credit card on site in the lock.

6.1.2 Lock fee for pleasure boats

When passing through with pleasure boats towards the Baltic/Saltsjön, a lock fee is paid per passage, at the locks. The fee is not paid when presenting a season pass.

Fee for passage from Lake Mälaren to the Baltic	320 SEK (incl. VAT)
---	---------------------

There is no fee for kayaks and canoes.

Season passes can be bought by pleasure boats in the locks. The card is tied to the vessel specified on the card in connection with the purchase and allows an unlimited number of passages during regular opening hours. The card must be presented in connection with each passage.

Season pass for pleasure boat	1,400 SEK (incl. VAT)
-------------------------------	-----------------------

6.2 The Victoria Locks

The Victoria Locks (the former Karl Johan Locks) are closed for the time being due to the rebuilding of Slussen.



6.3 Additional Regulations

Prices for lock passage at times other than ordinary opening times are quoted upon request.

The same tariff is levied for leisure boats that are towed as for self-propelled vessels.

Ports of Stockholm bears no responsibility for any damage incurred in connection with passage through the locks, other than in cases where Ports of Stockholm employees are found to have been negligent. Remuneration in every case is limited to the direct damage incurred and there is no entitlement to claim for loss of earnings/profit or other indirect damages.

Passage of canoes or similar is only admitted when lockage can be performed safely with regard to other traffic.

7 Delivery of Freshwater

The following tariffs apply for vessels that do not have a separate agreement with Ports of Stockholm. At a berth where the water is delivered from a fire hydrant with a water meter, the customer is charged as per delivered quantity. At berths where it is not possible to measure the quantity delivered, a special agreement can be made where a fixed charge per month will be debited instead. In addition, the customer also have to pay for the cost of a water meter.

Delivery from fire hydrant	Price/unit
Price per started m ³	36.54 SEK/m ³
Price per started m ³ after agreement	22.08 SEK/m ³
Minimum charge per delivery	2,885 SEK
Surcharge for delivery outside normal working hours, weekdays 16:00-07:00, weekends and holidays as well as for waiting time > 30 min	Charges as listed for the Service Group

The minimum charge also applies when ordered freshwater delivery is cancelled less than 24 hours before arrival.

Rent of water meter	Price/unit
Small	25 SEK/day
Large	43 SEK/day

Delivery without measuring quantity	Price/unit
Basic fee	663 SEK/month
Pontoon with a drain for sewage disposal	1,784 SEK/month
Pontoon without a drain for sewage disposal	761 SEK/month

7.1 Terms and Conditions of Supply

The customer must follow the instructions provided by the Ports of Stockholm personnel with regard to the supply of water and must also provide the necessary assistance to receive the materials aboard the vessel and ashore. The customer must ensure that the vessel's water tanks have sufficient venting capacity in relation to the supply capacity and that the tanks and coupled tubing are in such condition that these will not result in damage to the equipment. The water hydrants may only be used for the customer's own vessel operations. The key to the water hydrant provided by Ports of Stockholm must be returned when the water supply delivery has been completed. Remuneration for a lost or damaged water hydrant key must be made by the customer in the form of payment of the equivalent cost of ordering and manufacturing a new replacement key. The customer is not allowed to use their own tools or keys to access a water hydrant and must only use the water hydrant with a water hydrant key supplied by Ports of Stockholm.



Where applicable the customer must provide information about the volume of the supply in accordance with Ports of Stockholm's instructions. If there is leakage in the customer's facility or in other instance of unusual volume of supply a supplementary fee for the unusual volume of supply may be charged.

During connection, use or other instance the customer is not permitted to cause damage to the water hydrant or other property administered by Ports of Stockholm. Ports of Stockholm accepts no liability for damage incurred by the customer in connection with the supply of fresh water or other instance other than when a Ports of Stockholm employee has been guilty of negligence. Damage compensation in every case is limited to the direct damage only and there is no entitlement to compensation for loss of income or other indirect damage.

The customer is also bound by the corresponding liabilities and limitations that apply to the property owner in accordance with the Stockholm Vatten AB general provisions for use of communal water and drainage facilities in Stockholm and Huddinge (Allmänna bestämmelser för brukande av den allmänna vatten- och avloppsanläggningen (ABVA) i Stockholm och Huddinge).